
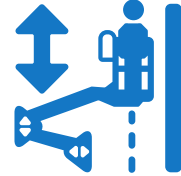



Deo Ca Tunnel – Installation of huge air ducts. Precise accessibility and lifting capability in narrow, confined spaces

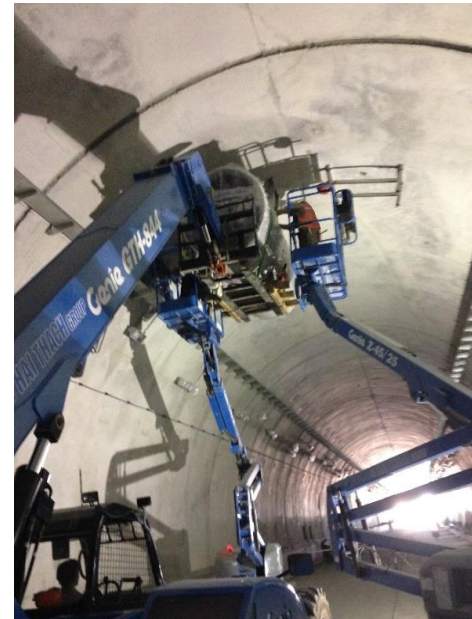
Each air duct measuring 5 ft (D) x 3.3 m (L) x 980 kg. Installation of several air ducts in the tight tunnel was dangerous and time consuming. Genie machines made it fast and safe for just five workers to lift and maneuver the air ducts into the precise location for easy installation.

Project: M&E | Location: Vietnam | Time to Complete: 4 days per air duct

 <p>Loading / Unloading and Moving Air Ducts</p>	 <p>Precise Maneuvering to Any Point</p>	 <p>355° Non-Continuous Turntable Rotation</p>
------------------------------------------------------------------------------------------------------------------------------------------	----------------------------------------------------------------------------------------------------------------------------------	-----------------------------------------------------------------------------------------------------------------------------------------

GENIE SOLUTION	
SAFETY	Active oscillating axle - Helps maintain traction on rough terrain
PRODUCTIVITY	Tight turning radius and zero tail swing for easy maneuvering in tight space Simple to maneuver into different points for easy installation
COMPLEMENTARY MACHINES	Boom lifts' compactness (2.3 m width) allows 2 units with workers to work on both sides of the air duct lifted by a telehandler

*Some models may no longer be in production or may have been replaced by newer machines.



A Genie GTH-844 telehandler and two Genie Z-45/25 booms were used

Genie® GTH™-844 Telehandler Basic Specifications



3629 kg



13.36m



8.59m



Only five workers were needed - two in each boom and one on the telehandler

Genie Machines* Involved: 3

- 2 Genie Z®-45/25 RT Boom Lifts
- 1 Genie GTH-844 telehandler