

TECH TIPS

Service Call:

No hydraulic pump pressure.

Tools Needed:

Hydraulic pressure test gauge (5000 psi)
Regular hand tools

Model:

TZ34/20



Tech Tips Safety Rules



Danger

Failure to obey the instructions and safety rules in the appropriate Operator's Manual and Service Manual for your machine will result in death or serious injury. Many of the hazards identified in the operator's manual are also safety hazards when maintenance and repair procedures are performed.

Do Not Perform Maintenance Unless:

- You are trained and qualified to perform maintenance on this machine.
- You read, understand and obey:
 - manufacturer's instructions and safety rules
 - employer's safety rules and worksite regulations
 - applicable governmental regulations
- You have the appropriate tools, lifting equipment and a suitable workshop.

The information contained in this tech tip is a supplement to the service manual. Consult the appropriate service manual of your machine for safety rules and hazards.

Step 1

To verify the lack of hydraulic pressure start with the machine in the stowed configuration.

Connect a hydraulic pressure gauge, that is capable of reading up to 5000 PSI, to the test port on top of the hydraulic power unit, as shown on the right.

Fully retracting the extension boom, will cause the system pressure relief valve to open, and the gauge should register the 3600 PSI of hydraulic pressure preset by the factory.



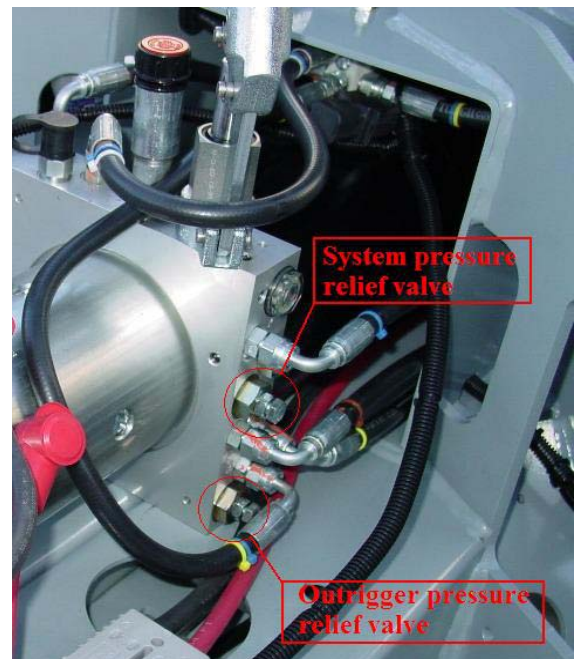
Step 2

To adjust the pressure using the relief valves:

Proceed by loosening the lock nut at the base of the system pressure adjustment screw, and then turning the screw in clockwise until the correct pressure is reached.

If the pressure does not increase after the screw bottoms, try turning in the outrigger pressure relief valve, in the same manner:

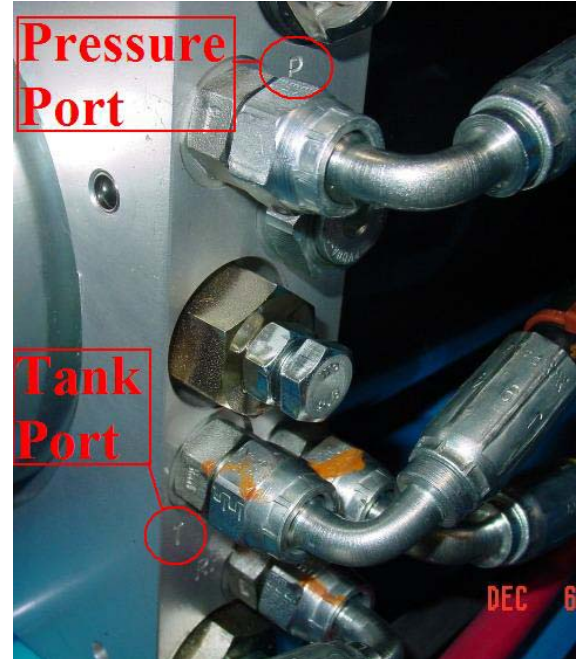
- If the pressure still cannot be increased, go to step 3.
- If you have been able to raise the pressure to 3600 PSI, by adjusting only the system pressure relief valve. You are done and may now return the machine to service.
- If you raised the pressure by adjusting the outrigger pressure, go to step 5.



Step 3

To test the hydraulic pump:

- 1) Disconnect the hose and fitting to the pressure port, as indicated on photo at right.
- 2) Install plug into exposed pressure port.
- 3) Press and hold the down function push button (yellow circled) to activate pump. Caution do not run the pump this way for more than 30 seconds without allowing time for cool down.



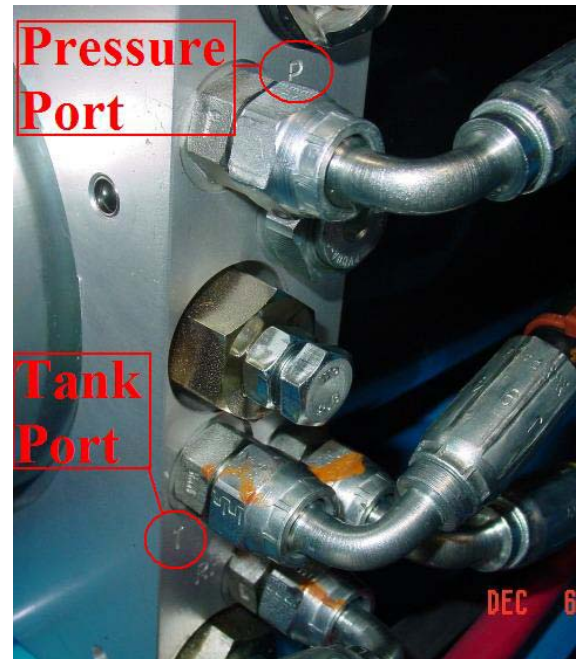
Step 4

The following pressure readings will determine how to proceed:

- 1) 4000+ PSI... Strong pump:
 - Reset pressure relief valves and return machine to service.
- 2) 3000-4000 PSI... Good but worn pump:
 - Reset pressure relief valves and return machine to service.
- 3) 2000-3000 PSI... Fair but worn pump:
 - Optional return to service or replace.
- 4) 0-2000 PSI... Replace pump

Machines with a serial number of TZ3407-000484 and earlier use the following part number: 124089

For machines with serial numbers after TZ3407-000484 use part number: 124100.

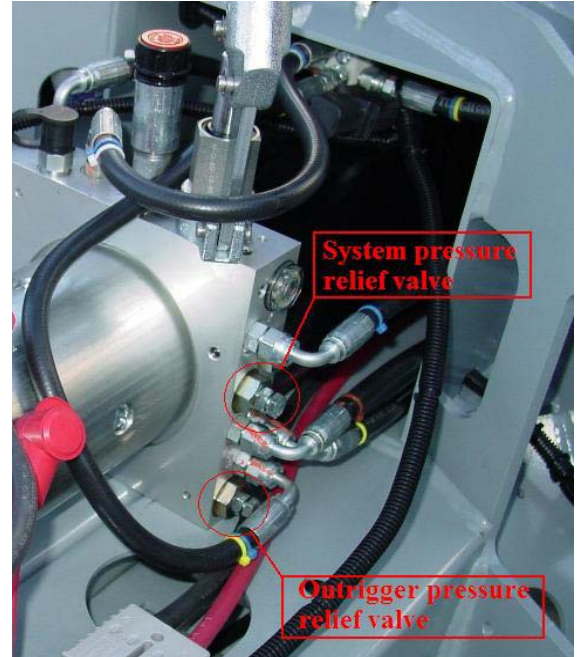


Step 5

To reset the pressure relief valves to their correct factory settings, use the following procedure:

- 1) Start by setting the system pressure relief valve on the power unit, by retracting the extension boom and setting the pressure to 4300 PSI.
- 2) Then set the outrigger pressure relief valve by retracting the outriggers fully and adjusting it to 4000 psi.
- 3) Then go back to the system pressure relief valve and reset it to 3600 PSI, by retracting the extension boom.

Return the machine to service once the above has been completed. If you need further assistance or parts please call Genie 360 at 1-800-536-1800.



Step 6