

TECH TIPS

SERVICE CALL:

Batteries draining while sitting.
Testing battery separator/isolator

TOOLS NEEDED:

Clamp on DC AMP meter is recommended

MODELS:

Z80/60, Z135/70, S100 series booms with multiple batteries



Tech Tips Safety Rules



Danger

Failure to obey the instructions and safety rules in the appropriate Operator's Manual and Service Manual for your machine will result in death or serious injury. Many of the hazards identified in the operator's manual are also safety hazards when maintenance and repair procedures are performed.

Do Not Perform Maintenance Unless:

- You are trained and qualified to perform maintenance on this machine.
- You read, understand and obey:
 - manufacturer's instructions and safety rules
 - employer's safety rules and worksite regulations
 - applicable governmenta
l regulations
- You have the appropriate tools, lifting equipment and a suitable workshop.

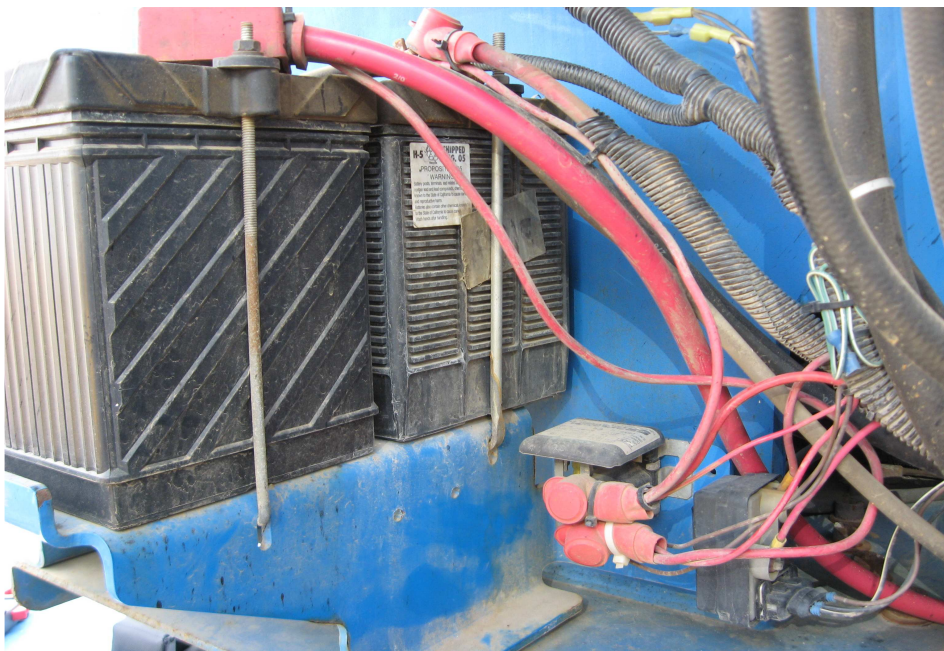
The information contained in this tech tip is a supplement to the service manual. Consult the appropriate service manual of your machine for safety rules and hazards.

TECH TIPS



Step 1

With the key switch in off position and both platform and ground control stop buttons pushed in, locate the machines battery separator/isolator near the fuse/relay panel and batteries.



Step 2

Clamp your DC AMP meter around the red wire coming from the separator/isolator.



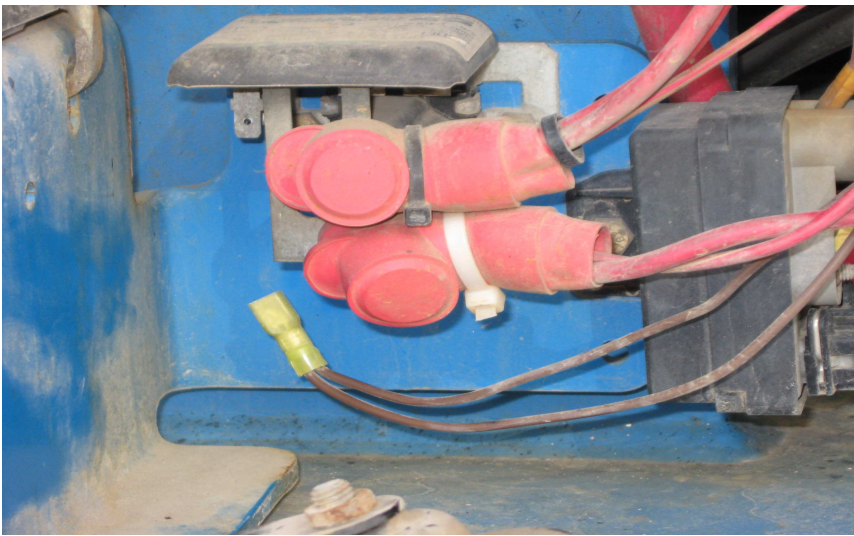
You should see no AMP reading.

If you receive an AMP reading on you meter, you may have a bad separator/isolator which can drain your batteries while sitting.



Step 3

With the key switch to ground controls and the red stop button pulled to the on position, but the machine not running, unplug the brown ground wire from the side of the separator/isolator.



You should hear a distinct audible click sound when you unplug this wire from the separator/isolator. If you do not hear a click, this is another good indication the battery separator/isolator is bad and draining your batteries down.

If you find these conditions while testing this component, you should replace the separator/isolator on your machine.

TECH TIPS



TECH TIPS



TECH TIPS



TECH TIPS



TECH TIPS



TECH TIPS

