

TECH TIPS

Service Call:

**Ford Unit tier II or III cranks over, but
No start from platform on gas**

Tools Needed:

Multi meter
7/16 wrench

Model:

Ford Tier II&III



Tech Tips Safety Rules



Danger

Failure to obey the instructions and safety rules in the appropriate Operator's Manual and Service Manual for your machine will result in death or serious injury. Many of the hazards identified in the operator's manual are also safety hazards when maintenance and repair procedures are performed.

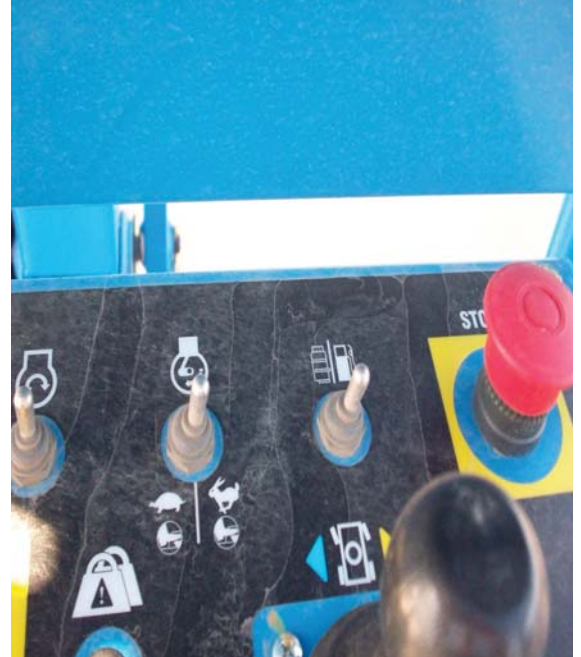
Do Not Perform Maintenance Unless:

- You are trained and qualified to perform maintenance on this machine.
- You read, understand and obey:
 - manufacturer's instructions and safety rules
 - employer's safety rules and worksite regulations
 - applicable governmental regulations
- You have the appropriate tools, lifting equipment and a suitable workshop.

The information contained in this tech tip is a supplement to the service manual. Consult the appropriate service manual of your machine for safety rules and hazards.

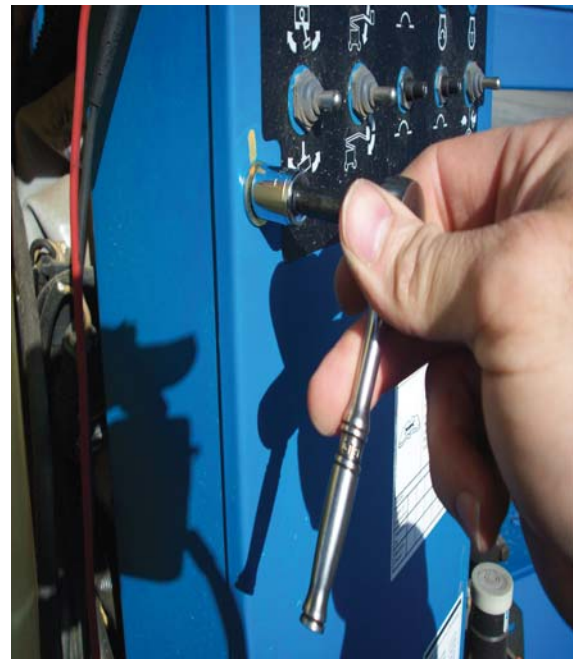
Step 1

Check platform fuel select switch to verify switch to proper fuel Gas.
Pull stop button to on position.
Check for no start situation.
If unit fails to start continue to step 2.



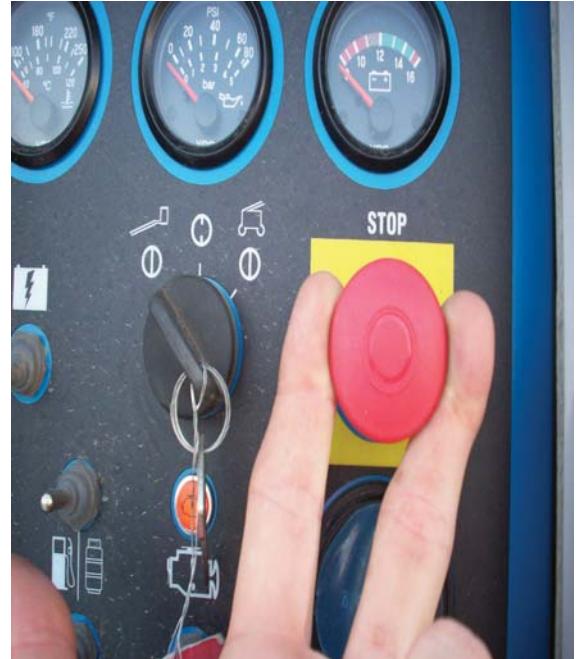
Step 2

Open base control box by removing 1/4-20 fasteners.



Step 3

Turn key switch to platform controls.
Pull stop button on at base.
Insure stop button is still on at platform.



Step 4

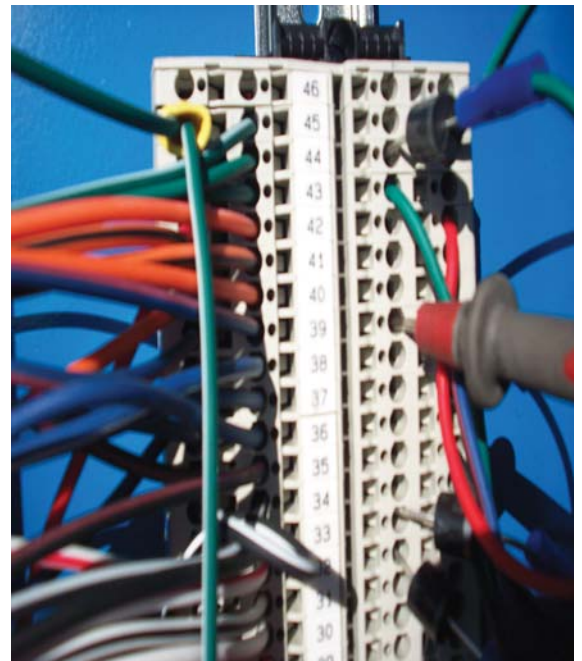
Check terminal 39 (blue / red trace) for voltage on gas. .

Result:

Should be 0 vdc

If you have 0 vdc call 1-800-536-1800 for further tech support

If you have more than 2 vdc continue to step 5.



Step 5

Open platform control box. by removing 6 1/4-20 fasteners



Step 6

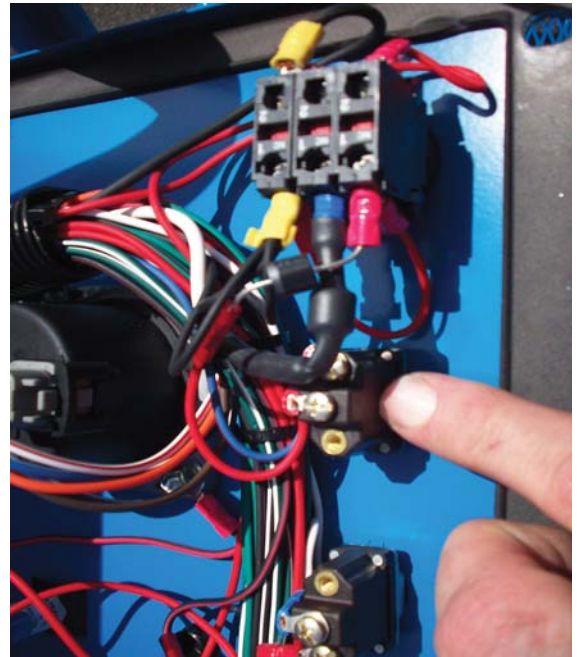
Locate fuel select switch and remove the center terminal (White wire). Check blue/red trace on right side of switch for voltage.

Result:

Should be 0 VDC

If no voltage, replace switch. (Part # 56457-S)

If you still have voltage proceed to step 7.



Step 7

Trace the cable from the gray plug located at the platform controls, throughout the unit, checking for damage.

Result:

If no damage found, call 1-800-536-1800 for further tech support.

If damage found repair accordingly.

