

Genie® S®-85 XC™ FE & S-85 XC E

Specifications

Models	S-85 XC FE & S-85 XC E	
Measurements	US	Metric
Working height max.(1)	91 ft	27.91 m
Platform height max.	85 ft	25.91 m
Horizontal reach max.	74 ft 6 in	22.71 m
Below ground reach	8 ft 8 in	2.64 m
A Platform length (8 ft/6 ft)	3 ft/2 ft 6 in	0.91 m/0.76 m
B Platform width (8 ft/6 ft)	8 ft/6 ft	2.44 m/1.83 m
C Height - stowed	9 ft 4 in	2.84 m
D Length - stowed	41 ft 9 in	12.37 m
D Length - storage/transport (jib tucked under)	34 ft 6 in	10.51 m
E Width	8 ft 2 in	2.49 m
F Wheelbase	10 ft	3.05 m
G Ground clearance - center	16.8 in	0.42 m
H Height under counterweight	3 ft 11 in	1.19 m

Productivity

Lift capacity max. - unrestricted	660 lb	300 kg
Lift capacity max. - restricted	1,000 lb	454 kg
Number of Platform Occupants (restricted/unrestricted)		3/2
Platform rotation		160°
Jib length	5 ft	1.52 m
Vertical jib rotation (up/down)		133°
Turntable rotation		360°
Turntable tailswing	5 ft 9 in	1.75 m
Drive speed - stowed	3.0 mph	4.8 km/h
Drive speed - raised	0.5 mph	0.2 m/s
Gradeability - stowed ⁽²⁾		45%
Tilt sensor activation (front to back/side to side)		7°/5°
Turning radius - inside/outside	11 ft 6 in/22 ft 3 in	3.50 m/6.78 m
Tires		18-710

Power

Drive System	48V 3-Phase AC	
Battery Pack, Electric (high capacity)	48V DC (8×6V), Li-ion	
Battery Pack, Hybrid (standard capacity)	48V DC (8×6V), Li-ion	
AC generator, Hybrid	Diesel	
Auxiliary power unit, Hybrid	48V DC (4×12V)	
Hydraulic tank capacity	28 gal	106 L
Fuel tank capacity	17 gal	64 L

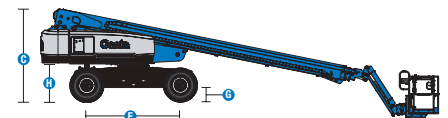
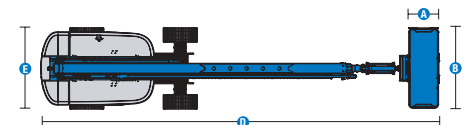
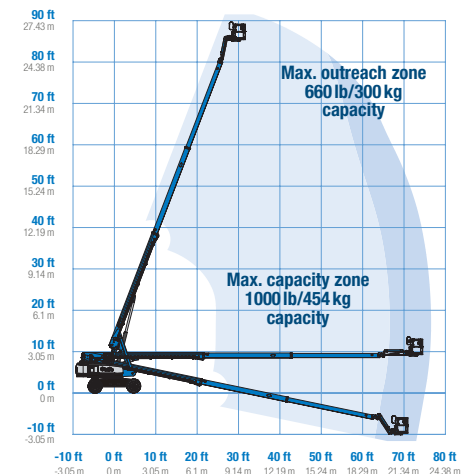
Weight(3) and Floor Loading⁽⁴⁾

Weight, Electric	38,908 lb	17,648 kg
Weight, Hybrid	39,592 lb	17,958 kg
Tire contact pressure	198 psi	1365 kPa
Occupied floor pressure	395 psf	18.9 kPa

Sound and Vibration Levels

Sound Pressure level (ground workstation), Electric/Hybrid	< 70 dBA/83 dBA	
Sound Pressure level (platform workstation), Electric/Hybrid	< 70 dBA/72 dBA	
Vibrations	1.15 ft/s ²	0.35 m/s ²

Range of motion S-85 XC



(1) The metric equivalent of working height adds 2m to platform height. The imperial equivalent adds 6ft to platform height.

(2) Gradeability applies to driving on slopes and may vary depending on options and machine configurations. See operator's manual for details regarding slope ratings.

(3) Weight refers to standard configuration and may vary depending on options and/or country standards.

(4) Floor loading information is approximate and may vary depending on options and machine configurations. It should be used only with adequate safety factors.

Genie® S® -85 XC™ FE & S-85 XC E

SKU: Standard Model

- **S85XC FE1AG0009:** S-85 XC FE, Hybrid, Std. Lithium Battery, 4WD, RT FF tires
- **S85XC FE1AG0010:** S-85 XC FE, Hybrid, Std. Lithium Battery, 4WD, RT FF tires, 12kW Lift Power

* Build to Order

SKU: Standard Model

- **S85XC E01AE0001:** S-85 XC E, Electric, XC Lithium Battery, 4WD, RT FF tires
- **S85XC E01AE0002:** S-85 XC E, Electric, XC Lithium Battery, 4WD, RT FF tires, 12kW Lift Power

Option availability	S	S+	BtO
Power			
24.8 hp, 18.5kW, Kubota D1105, Diesel, T4i/T4f, Stage IIIA/IV, CN IV (Hybrid model only)	✓	✓	✓
Lithium-Ion Maintenance-Free Battery	✓	✓	✓
48V solid state battery charger 1.2kW (Standard on Hybrid)	✓	✓	✓
48V solid state battery charger 3.3kW (Standard on Electric)*	✓	✓	✓
EVSE: electric vehicle charging port		○	○
Power inverter 3kW 120V/60Hz		○	○
3-phase AC drive system	✓	✓	✓
48V DC auxiliary power unit	✓	✓	✓
Charge Port NMA 5-15	✓	✓	✓
Low voltage interrupt (LVI) with battery charge indicator (BCI)	✓	✓	✓
Platform			
6ft/1.83m dual-entry platform with side swing gate			○
8ft/2.44m tri-entry platform with side swing gate	✓	✓	✓
Power to platform, US Plug	✓	✓	✓
Dual axis joystick steering	✓	✓	✓
Air line to platform			○
Control box covers		○	○
Lift Guard Full Mesh panels			○
Lift Guard Half Mesh panels			○
Light Package: drive and work lights		○	○
Platform auxiliary top rail			○
Lift Power 12kW Welder Ready AC Generator			○
660lb/300kg & 1000lb/454kg dual load capacity with automatic envelope control	✓	✓	✓
AC Power cord to platform	✓	✓	✓
Drive enable system	✓	✓	✓
Horn	✓	✓	✓
Lift Guard Contact Alarm	✓	✓	✓
Lift Tools Work Tray	✓	✓	✓
Platform load sense system	✓	✓	✓
Proportional controls	✓	✓	✓
Self-leveling platform	✓	✓	✓
Chassis			
Telematics-ready connector	✓	✓	✓
Lift Connect Telematics		○	○
Lift Connect with Access Manager upgrade		○	○
Biodegradable hydraulic oil			○
Cold weather hydraulic oil			○
Fire resistant hydraulic oil			○
Rough terrain, foam-filled tires	✓	✓	✓
Rough terrain, foam-filled, non-marking tires		○	○
Cold Start Package (Kubota)			○
Lift Guard White Noise Alarm		○	○
Hostile environment kit			○
Lift Tools Panel Cradle			✓
Active oscillating axle	✓	✓	✓
Alarm package: flashing beacons, descent, travel and tilt alarms	✓	✓	✓
Chassis tilt drive function cut-out	✓	✓	✓
Chassis tilt lift and drive function cut-out	✓	✓	✓
Descent, tilt and motion alarm	✓	✓	✓
Electric brake release	✓	✓	✓
Hour meter	✓	✓	✓
On-board diagnostic system	✓	✓	✓
Tech Pro Link connector	✓	✓	✓

*Optional on Hybrid when equipped with XC Battery

- S Standard
- S+ Standard +
- BtO Build to Order
- ✓ Standard Features
- Options



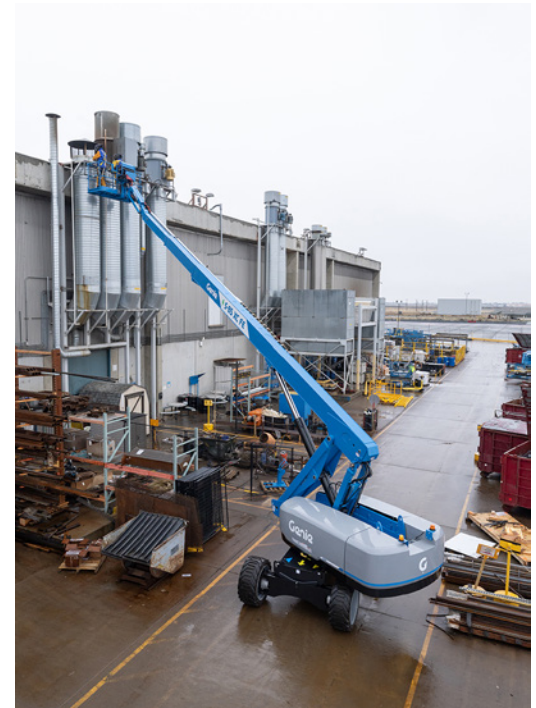
Xtra Capacity



Low Noise, Low Emissions



Lift Power



Genie Genuine Accessories⁽¹⁾

- Lift Tools Productivity Tools
- Lift Connect Telematics
- Tech Pro Link Handheld Device

(1) More accessories available from Genie Genuine Parts.

Product specifications are subject to change without notice or obligation. Photographs and/or drawings herein are for illustrative purposes only. Refer to the appropriate Operator's Manual for instructions on proper equipment use. Failure to follow instructions in the Operator's Manual may result in serious injury or death. The only warranty applicable to our equipment is the standard written warranty applicable to the particular product and sale and we make no other warranty, express or implied. Products and services listed may be trademarks, service marks or trade names of Terex Corporation and/or their subsidiaries in the USA and many other countries. Terex, Genie, Quality By Design, Xtra Capacity, Lift Power, Lift Guard, Lift Tools, Lift Connect and Tech Pro Link are registered trademarks of Terex Corporation or its subsidiaries.