

Genie® Z[®]-45/25J RT

Specifications

Models	Z-45/25J RT
Working height max.(1)	15.86m
Platform height max.	13.86m
Horizontal reach max.	7.52m
Up and over clearance max.	7.14m
A Platform length	0.76m
B Platform width	1.83m
C Height - stowed	2.13m
D Length - stowed	6.65m
E Width	2.29m
F Wheelbase	2.03m
G Ground clearance - center	0.37m

Productivity

Lift capacity max. - unrestricted	227 kg
Platform rotation	160°
Jib length	1.52 m
Vertical jib rotation	135°
Turntable rotation	355°
Turntable tailswing	0 cm
Drive speed - stowed ⁽²⁾	5 km/h
Drive speed - raised	1.1 km/h
Gradeability - stowed ⁽²⁾	45%
Tilt sensor activation (front to back/side to side)	2.5°- 4.5° / 4.5°
Turning radius - inside/outside	1.68m/4.50 m
Tires (solid, non-marking)	315/55 D20

Power

Power	Diesel
Auxiliary power unit	12V DC
Hydraulic tank capacity	83L
Fuel tank capacity	64L

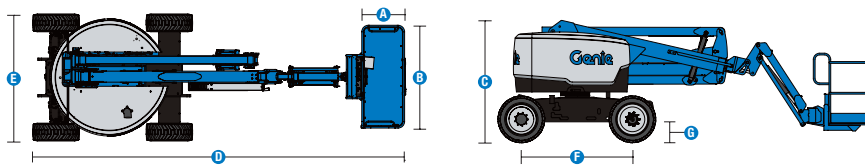
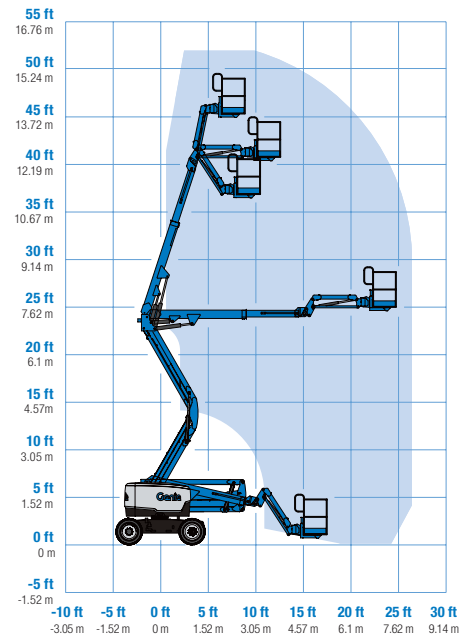
Weight(3) and Floor Loading(4)

Weight	6,515 kg
Tire contact pressure	414 kPa
Occupied floor pressure (tires)	9.12 kPa

Sound and Vibration Levels

Sound Pressure level (ground workstation)	87 dBA
Sound Pressure level (platform workstation)	82 dBA
Vibrations	2.5 m/s ²

Range of motion Z-45/25J RT



(1) The metric equivalent of working height adds 2m to platform height. The imperial equivalent adds 6ft to platform height.

(2) Gradeability applies to driving on slopes and may vary depending on options and machine configurations. See operator's manual for details regarding slope ratings.

(3) Weight refers to standard configuration and may vary depending on options and/or country standards.

(4) Floor loading information is approximate and may vary depending on options and machine configurations. It should be used only with adequate safety factors.

Genie® Z[®]-45/25J RT

SKU: Standard Model

- Z45RT001C30001: Z-45/25J RT, 4WD

* Build to Order

Option availability		S	S+	BtO
Power	24 hp, 19.4 kW, Kubota D1105, Diesel, T4i/T4f, Stage IIIA/V, CN IV	✓	✓	✓
	Engine gauge package			○
Platform	6ft/1.83m dual-entry platform with side swing gate	✓	✓	✓
	Thumb rocker steering			○
	AC Power cord to platform			○
	Air line to platform			○
	Control box covers		○	○
	Light Package: drive and work lights			○
	Alarm package: flashing beacons, descent, travel and tilt alarms	✓	✓	✓
	Drive enable system	✓	✓	✓
	Horn	✓	✓	✓
	Lift Guard Contact Alarm	✓	✓	✓
	Lift Tools Work Tray	✓	✓	✓
	Platform load sense system	✓	✓	✓
	Proportional controls	✓	✓	✓
	Self-leveling platform	✓	✓	✓
Chassis	Lift Connect Telematics			○
	Telematics-ready	✓	✓	✓
	Lift Connect with Access Manager upgrade		○	○
	Eco32 biodegradable hydraulic oil		○	○
	Hostile environment kit			○
	Hydraulic oil cooler			○
	Active oscillating axle	✓	✓	✓
	Chassis tilt lift and drive function cut-out	✓	✓	✓
	Dual parallelogram lift linkage	✓	✓	✓
	Hour meter	✓	✓	✓
	Positive traction drive	✓	✓	✓
Zero tail swing	✓	✓	✓	

Engine make and model subject to availability

- S Standard
- S+ Standard +
- BtO Build to Order
- ✓ Standard Features
- Options



Rugged Terrainability



Zero Tailswing



Dual Parallel Linkage



Genie Genuine Accessories⁽¹⁾

- Lift Tools Productivity Tools
- Tech Pro Link Handheld Device

(1) More accessories available from Genie Genuine Parts.

Product specifications are subject to change without notice or obligation. Photographs and/or drawings herein are for illustrative purposes only. Refer to the appropriate Operator's Manual for instructions on proper equipment use. Failure to follow instructions in the Operator's Manual may result in serious injury or death. The only warranty applicable to our equipment is the standard written warranty applicable to the particular product and sale and we make no other warranty, express or implied. Products and services listed may be trademarks, service marks or trade names of Terex Corporation and/or their subsidiaries in the USA and many other countries. Terex, Genie, Quality By Design, Xtra Capacity, Lift Power, Lift Guard, Lift Tools, Lift Connect and Tech Pro Link are registered trademarks of Terex Corporation or its subsidiaries.