

# Genie® Z®-60 DC & Z-60 FE

## Specifications

| Models   | Z-60 DC & Z-60 FE |
|--|-------------------|
| Working height max. <sup>(1)</sup>                             | 20.16 m           |
| Platform height max.   | 18.16 m           |
| Horizontal reach max.  | 11.15 m           |
| Up and over clearance max.                                     | 7.39 m            |
| <b>A</b> Platform length (8 ft/6 ft)                           | 0.91 m/0.76 m     |
| <b>B</b> Platform width (8 ft/6 ft)                            | 2.44 m/1.83 m     |
| <b>C</b> Height - stowed (tires)                               | 2.54 m            |
| <b>C</b> Height - storage/transport (jib tucked under) (tires) | 2.62 m            |
| <b>D</b> Length - stowed (tires)                               | 8.15 m            |
| <b>E</b> Width   | 2.49 m            |
| <b>F</b> Wheelbase   | 2.49 m            |
| <b>G</b> Ground clearance - center                             | 0.33 m            |

## Productivity

|   |               |
|---|---------------|
| Lift capacity max. - unrestricted                   | 227 kg        |
| Platform rotation                                   | 160°          |
| Jib length  | 1.52 m        |
| Vertical jib rotation                               | 135°          |
| Turntable rotation                                  | 355°          |
| Drive speed - stowed <sup>(2)</sup>                 | 6.44 km/h     |
| Drive speed - raised                                | 1.1 km/h      |
| Gradeability - stowed <sup>(2)</sup>                | 45%           |
| Tilt sensor activation (front to back/side to side) | 2.5° / 4.5°   |
| Turning radius - inside/outside                     | 2.51 m/5.69 m |
| Tires   | 355/55 D625   |

## Power

|                         |                            |
|-------------------------|----------------------------|
| Drive system            | 34V 3-Phase AC             |
| Battery Pack, DC        | 48V DC (8×6V), 390 Ah, FLA |
| Battery Pack, FE        | 48V DC (8×6V), 415 Ah, AGM |
| AC generator, FE        | Diesel                     |
| Auxiliary power unit    | 12V DC                     |
| Hydraulic tank capacity | 68.14 L                    |
| Fuel tank capacity      | 64 L                       |

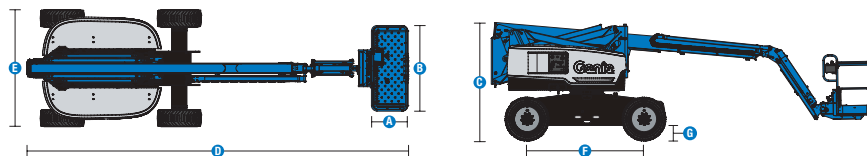
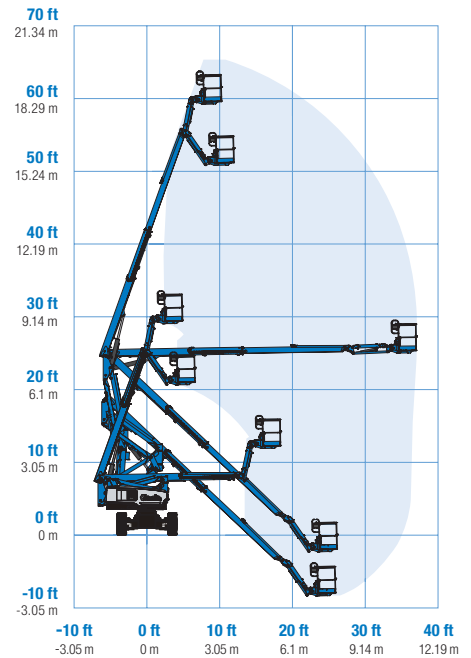
## Weight<sup>(3)</sup> and Floor Loading<sup>(4)</sup>

|                                 |          |
|---------------------------------|----------|
| Weight, DC                      | 7,530 kg |
| Weight, FE                      | 7,756 kg |
| Tire contact pressure           | 483 kPa  |
| Occupied floor pressure (tires) | 8.62 kPa |

## Sound and Vibration Levels

|   |                         |
|---|-------------------------|
| Sound Pressure level (ground workstation)   | 70 dBA (DC)/77 dBA (FE) |
| Sound Pressure level (platform workstation) | 70 dBA (DC)/72 dBA (FE) |
| Vibrations                                  | 0.55 m/s <sup>2</sup>   |

## Range of motion Z-60 DC & FE



(1) The metric equivalent of working height adds 2 m to platform height. The imperial equivalent adds 6 ft to platform height.  
 (2) Gradeability applies to driving on slopes and may vary depending on options and machine configurations. See operator's manual for details regarding slope ratings.  
 (3) Weight refers to standard configuration and may vary depending on options and/or country standards.  
 (4) Floor loading information is approximate and may vary depending on options and machine configurations. It should be used only with adequate safety factors.

# Genie® Z<sup>®</sup>-60 DC & Z-60 FE

**SKU: Standard Model**

- Z-60 DC, DC Power, 4WD\*
- Z-60 FE Hybrid, 4WD\*

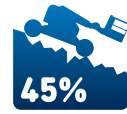
\* Build to Order

| Option availability   |   | S | S+ | BtO |
|---|---|---|----|-----|
| Power   | 24 hp, 18.5 kW, Kubota D1105, Diesel, T4i/T4f, Stage IIIA/V, CN III |   |    | ✓   |
|   | Standard FLA flooded lead acid battery                              |   |    | ○   |
|   | AGM Maintenance-free batteries (Standard on FE)                     |   |    | ✓   |
|   | Power inverter, 2kW, 110V/50Hz                                      |   |    | ○   |
|   | Power inverter, 2kW, 120V/60Hz                                      |   |    | ○   |
|   | Power inverter, 2kW, 240V/50Hz                                      |   |    | ○   |
|   | Low voltage interrupt (LVI) with battery charge indicator (BCI)     |   |    | ✓   |
| Platform  | Dual axis joystick steering   |   |    | ○   |
|   | Thumb rocker steering   |   |    | ○   |
|   | Air line to platform  |   |    | ○   |
|   | Control box covers  |   |    | ○   |
|   | Lift Guard Full Mesh panels   |   |    | ○   |
|   | Lift Guard Half Mesh panels   |   |    | ○   |
|   | Light Package: drive and work lights                                |   |    | ○   |
|   | Platform auxiliary top rail   |   |    | ○   |
|   | 5ft/1.52m Jib   |   |    | ✓   |
|   | AC Power cord to platform   |   |    | ✓   |
|   | Drive enable system   |   |    | ✓   |
|   | Horn  |   |    | ✓   |
|   | LCD display   |   |    | ✓   |
|   | Lift Guard Contact Alarm  |   |    | ✓   |
|   | Lift Tools Work Tray  |   |    | ✓   |
|   | Platform load sense system  |   |    | ✓   |
|   | Proportional controls   |   |    | ✓   |
| Self-leveling platform  |   |   | ✓  |     |
| Travel alarm package: flashing beacons, descent, travel and tilt alarms |   |   | ✓  |     |
| Chassis   | Lift Connect Telematics   |   |    | ○   |
|   | Lift Connect with Access Manager upgrade                            |   |    | ○   |
|   | Rough terrain, foam-filled, non-marking tires                       |   |    | ✓   |
|   | Rough terrain, foam-filled tires                                    |   |    | ○   |
|   | Chassis tilt lift function cut-out                                  |   |    | ○   |
|   | Hostile environment kit   |   |    | ○   |
|   | Tow package   |   |    | ○   |
|   | Active oscillating axle   |   |    | ✓   |
|   | Chassis tilt drive function cut-out                                 |   |    | ✓   |
|   | Dual parallelogram lift linkage                                     |   |    | ✓   |
|   | Electric brake release  |   |    | ✓   |
|   | Hour meter  |   |    | ✓   |
|   | On-board diagnostic system  |   |    | ✓   |

- S Standard
- S+ Standard +
- BtO Build to Order
- ✓ Standard Features
- Options



Indoor & Outdoor Boom



Rugged Terrainability



Low Noise, Low Emissions



Genie Genuine Accessories<sup>(1)</sup>

- Lift Tools Productivity Tools
- Tech Pro Link Handheld Device

(1) More accessories available from Genie Genuine Parts.

Product specifications are subject to change without notice or obligation. Photographs and/or drawings herein are for illustrative purposes only. Refer to the appropriate Operator's Manual for instructions on proper equipment use. Failure to follow instructions in the Operator's Manual may result in serious injury or death. The only warranty applicable to our equipment is the standard written warranty applicable to the particular product and sale and we make no other warranty, express or implied. Products and services listed may be trademarks, service marks or trade names of Terex Corporation and/or their subsidiaries in the USA and many other countries. Terex, Genie, Quality By Design, Xtra Capacity, Lift Power, Lift Guard, Lift Tools, Lift Connect and Tech Pro Link are registered trademarks of Terex Corporation or its subsidiaries.